

## HOMICIDE Adult Arrest Rate\*

Colorado Adults, Rate per 100,000, 1980-1998



| YEAR | NUMBER | POPULATION | RATE |
|------|--------|------------|------|
| 1980 | 129    | 2096878    | 6.2  |
| 1981 | 190    | 2159370    | 8.8  |
| 1982 | 148    | 2230331    | 6.6  |
| 1983 | 150    | 2291745    | 6.5  |
| 1984 | 181    | 2327091    | 7.8  |
| 1985 | 146    | 2362460    | 6.2  |
| 1986 | 185    | 2388632    | 7.7  |
| 1987 | 148    | 2407569    | 6.1  |
| 1988 | 146    | 2408110    | 6.1  |
| 1989 | 149    | 2417146    | 6.2  |
| 1990 | 129    | 2442464    | 5.3  |
| 1991 | 170    | 2487571    | 6.8  |
| 1992 | 188    | 2559168    | 7.3  |
| 1993 | 182    | 2635445    | 6.9  |
| 1994 | 155    | 2703476    | 5.7  |
| 1995 | 169    | 2756354    | 6.1  |
| 1996 | 126    | 2812191    | 4.5  |
| 1997 | 142    | 2898130    | 4.9  |
| 1998 | 127    | 2963228    | 4.3  |

\*Excludes Negligent Manslaughter

**Sources:**

OFFENSE/ARREST DATA--Colorado Bureau of Investigation Annual Reports 1980-1998.

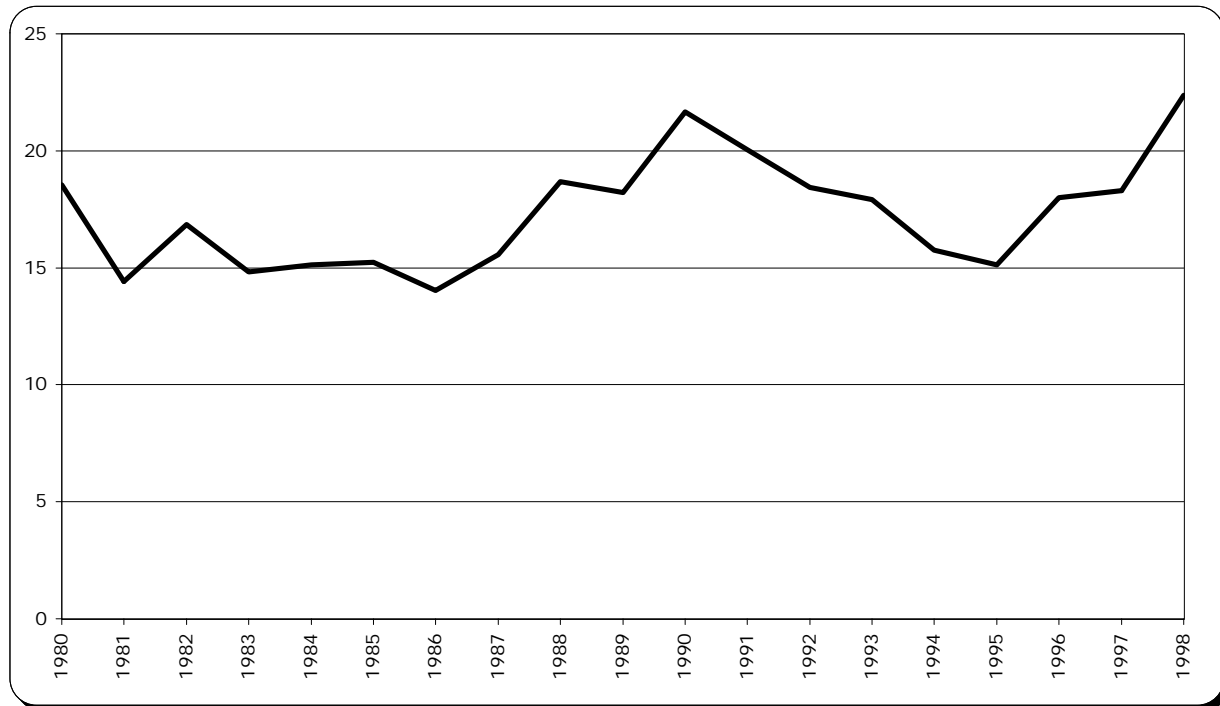
POPULATION DATA--Colorado State Demographer's Office, Department of Local Affairs.

1980-1989: Intercensal estimates, based on 1980 and 1990 Census. 1990-1998: Postcensal estimates, based on 1990 Census.

**Note:** All rates in this chart/graph were calculated using the adult Colorado population (18+ / males + females). Rate per 100,000.

## FORCIBLE RAPE Adult Arrest Rate

Colorado Adults, Rate per 100,000, 1980-1998



| YEAR | NUMBER | POPULATION | RATE |
|------|--------|------------|------|
| 1980 | 389    | 2096878    | 18.6 |
| 1981 | 311    | 2159370    | 14.4 |
| 1982 | 376    | 2230331    | 16.9 |
| 1983 | 340    | 2291745    | 14.8 |
| 1984 | 352    | 2327091    | 15.1 |
| 1985 | 360    | 2362460    | 15.2 |
| 1986 | 335    | 2388632    | 14.0 |
| 1987 | 375    | 2407569    | 15.6 |
| 1988 | 450    | 2408110    | 18.7 |
| 1989 | 440    | 2417146    | 18.2 |
| 1990 | 529    | 2442464    | 21.7 |
| 1991 | 499    | 2487571    | 20.1 |
| 1992 | 472    | 2559168    | 18.4 |
| 1993 | 472    | 2635445    | 17.9 |
| 1994 | 426    | 2703476    | 15.8 |
| 1995 | 417    | 2756354    | 15.1 |
| 1996 | 506    | 2812191    | 18.0 |
| 1997 | 530    | 2898130    | 18.3 |
| 1998 | 663    | 2963228    | 22.4 |

**Sources:**

OFFENSE/ARREST DATA--Colorado Bureau of Investigation Annual Reports 1980-1998.

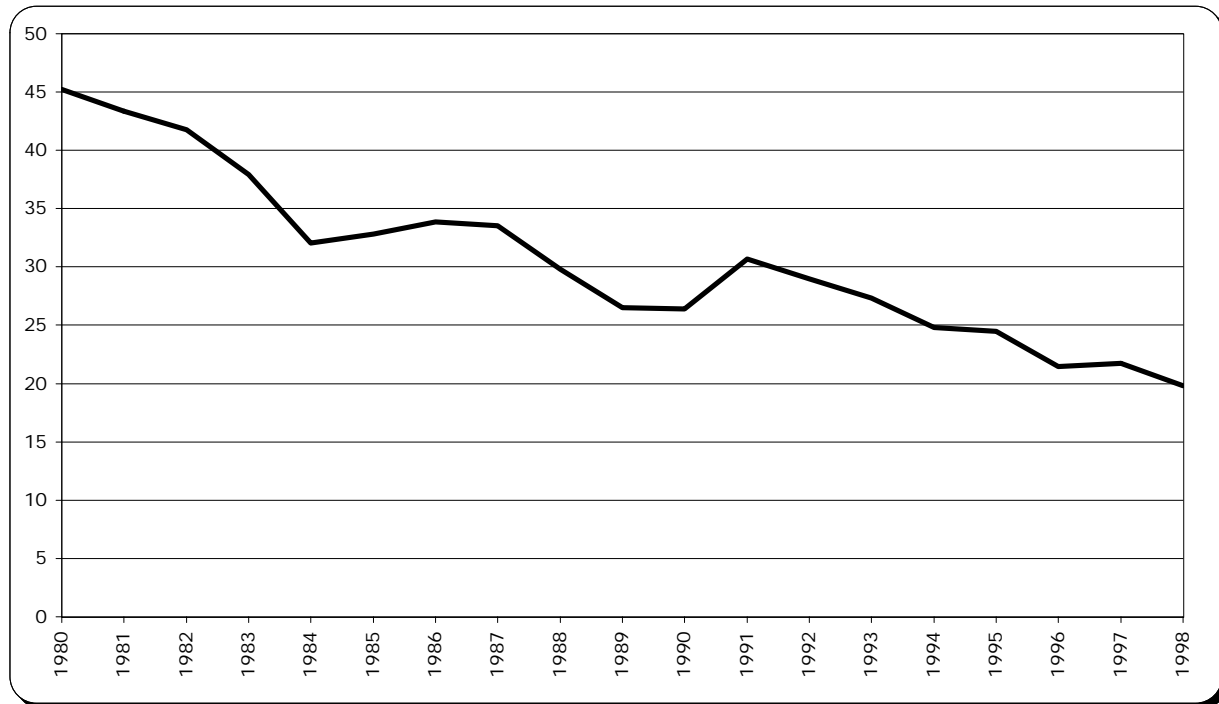
POPULATION DATA--Colorado State Demographer's Office, Department of Local Affairs.

1980-1989: Intercensal estimates, based on 1980 and 1990 Census. 1990-1998: Postcensal estimates, based on 1990 Census.

**Note:** All rates in this chart/graph were calculated using the adult Colorado population (18+ / males + females). Rate per 100,000.

## ROBBERY Adult Arrest Rate

Colorado Adults, Rate per 100,000, 1980-1998



| YEAR | NUMBER | POPULATION | RATE |
|------|--------|------------|------|
| 1980 | 948    | 2096878    | 45.2 |
| 1981 | 936    | 2159370    | 43.3 |
| 1982 | 931    | 2230331    | 41.7 |
| 1983 | 869    | 2291745    | 37.9 |
| 1984 | 746    | 2327091    | 32.1 |
| 1985 | 776    | 2362460    | 32.8 |
| 1986 | 809    | 2388632    | 33.9 |
| 1987 | 807    | 2407569    | 33.5 |
| 1988 | 718    | 2408110    | 29.8 |
| 1989 | 641    | 2417146    | 26.5 |
| 1990 | 645    | 2442464    | 26.4 |
| 1991 | 763    | 2487571    | 30.7 |
| 1992 | 741    | 2559168    | 29.0 |
| 1993 | 721    | 2635445    | 27.4 |
| 1994 | 670    | 2703476    | 24.8 |
| 1995 | 675    | 2756354    | 24.5 |
| 1996 | 603    | 2812191    | 21.4 |
| 1997 | 630    | 2898130    | 21.7 |
| 1998 | 587    | 2963228    | 19.8 |

**Sources:**

OFFENSE/ARREST DATA--Colorado Bureau of Investigation Annual Reports 1980-1998.

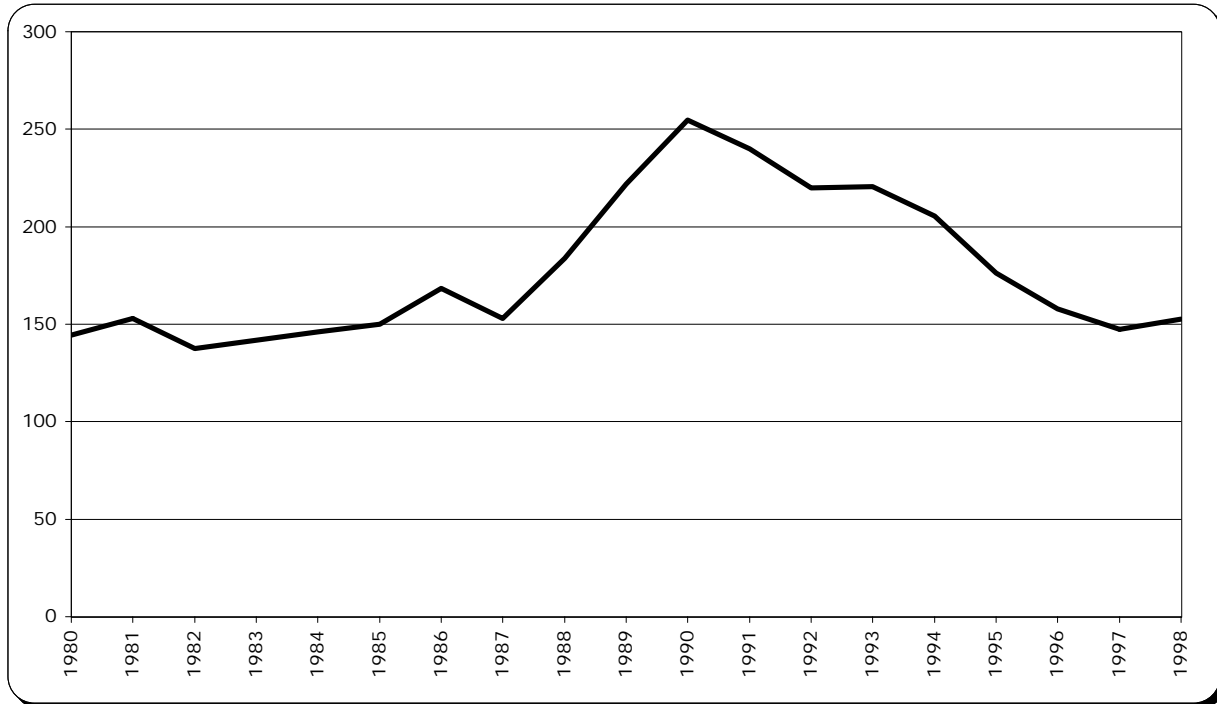
POPULATION DATA--Colorado State Demographer's Office, Department of Local Affairs.

1980-1989: Intercensal estimates, based on 1980 and 1990 Census. 1990-1998: Postcensal estimates, based on 1990 Census.

**Note:** All rates in this chart/graph were calculated using the adult Colorado population (18+ / males + females). Rate per 100,000.

## AGGRAVATED ASSAULT Adult Arrest Rate\*

Colorado Adults, Rate per 100,000, 1980-1998



| YEAR | NUMBER | POPULATION | RATE  |
|------|--------|------------|-------|
| 1980 | 3029   | 2096878    | 144.5 |
| 1981 | 3300   | 2159370    | 152.8 |
| 1982 | 3066   | 2230331    | 137.5 |
| 1983 | 3247   | 2291745    | 141.7 |
| 1984 | 3400   | 2327091    | 146.1 |
| 1985 | 3544   | 2362460    | 150.0 |
| 1986 | 4025   | 2388632    | 168.5 |
| 1987 | 3682   | 2407569    | 152.9 |
| 1988 | 4429   | 2408110    | 183.9 |
| 1989 | 5362   | 2417146    | 221.8 |
| 1990 | 6221   | 2442464    | 254.7 |
| 1991 | 5969   | 2487571    | 240.0 |
| 1992 | 5627   | 2559168    | 219.9 |
| 1993 | 5814   | 2635445    | 220.6 |
| 1994 | 5554   | 2703476    | 205.4 |
| 1995 | 4860   | 2756354    | 176.3 |
| 1996 | 4444   | 2812191    | 158.0 |
| 1997 | 4267   | 2898130    | 147.2 |
| 1998 | 4527   | 2963228    | 152.8 |

\*Excludes Simple Assault

### Sources:

OFFENSE/ARREST DATA--Colorado Bureau of Investigation Annual Reports 1980-1998.

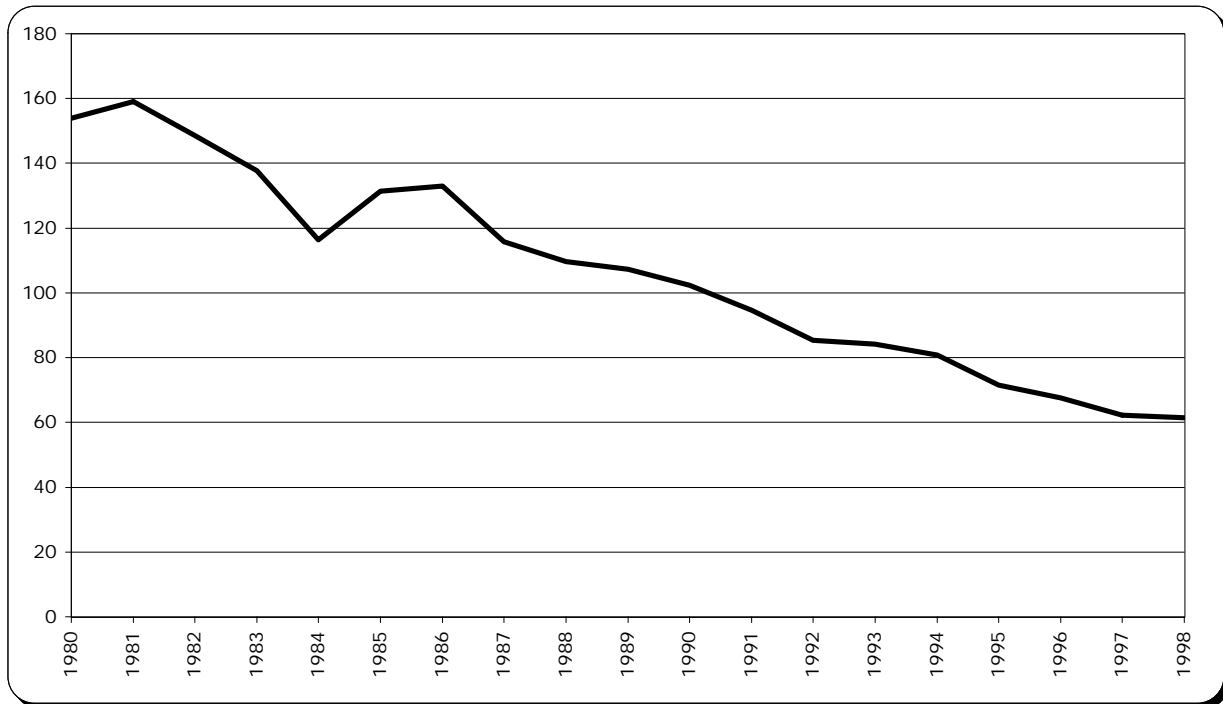
POPULATION DATA--Colorado State Demographer's Office, Department of Local Affairs.

1980-1989: Intercensal estimates, based on 1980 and 1990 Census. 1990-1998: Postcensal estimates, based on 1990 Census.

**Note:** All rates in this chart/graph were calculated using the adult Colorado population (18+ / males + females). Rate per 100,000.

## BURGLARY Adult Arrest Rate

Colorado Adults, Rate per 100,000, 1980-1998



| YEAR | NUMBER | POPULATION | RATE  |
|------|--------|------------|-------|
| 1980 | 3228   | 2096878    | 153.9 |
| 1981 | 3434   | 2159370    | 159.0 |
| 1982 | 3313   | 2230331    | 148.5 |
| 1983 | 3155   | 2291745    | 137.7 |
| 1984 | 2709   | 2327091    | 116.4 |
| 1985 | 3103   | 2362460    | 131.3 |
| 1986 | 3175   | 2388632    | 132.9 |
| 1987 | 2786   | 2407569    | 115.7 |
| 1988 | 2643   | 2408110    | 109.8 |
| 1989 | 2593   | 2417146    | 107.3 |
| 1990 | 2500   | 2442464    | 102.4 |
| 1991 | 2356   | 2487571    | 94.7  |
| 1992 | 2186   | 2559168    | 85.4  |
| 1993 | 2217   | 2635445    | 84.1  |
| 1994 | 2185   | 2703476    | 80.8  |
| 1995 | 1973   | 2756354    | 71.6  |
| 1996 | 1899   | 2812191    | 67.5  |
| 1997 | 1804   | 2898130    | 62.2  |
| 1998 | 1822   | 2963228    | 61.5  |

### Sources:

OFFENSE/ARREST DATA--Colorado Bureau of Investigation Annual Reports 1980-1998.

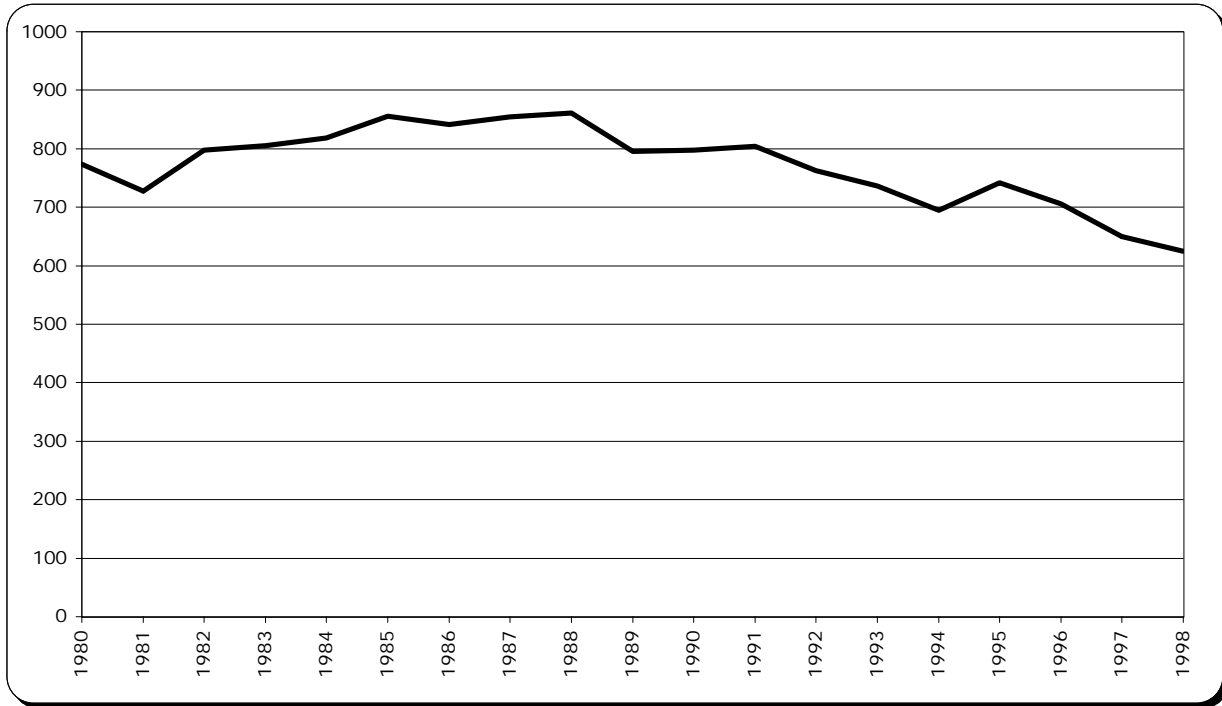
POPULATION DATA--Colorado State Demographer's Office, Department of Local Affairs.

1980-1989: Intercensal estimates, based on 1980 and 1990 Census. 1990-1998: Postcensal estimates, based on 1990 Census.

**Note:** All rates in this chart/graph were calculated using the adult Colorado population (18+ / males + females). Rate per 100,000.

## THEFT Adult Arrest Rate

Colorado Adults, Rate per 100,000, 1980-1998



| YEAR | NUMBER | POPULATION | RATE  |
|------|--------|------------|-------|
| 1980 | 16225  | 2096878    | 773.8 |
| 1981 | 15717  | 2159370    | 727.9 |
| 1982 | 17794  | 2230331    | 797.8 |
| 1983 | 18450  | 2291745    | 805.1 |
| 1984 | 19056  | 2327091    | 818.9 |
| 1985 | 20223  | 2362460    | 856.0 |
| 1986 | 20084  | 2388632    | 840.8 |
| 1987 | 20576  | 2407569    | 854.6 |
| 1988 | 20743  | 2408110    | 861.4 |
| 1989 | 19221  | 2417146    | 795.2 |
| 1990 | 19494  | 2442464    | 798.1 |
| 1991 | 19995  | 2487571    | 803.8 |
| 1992 | 19514  | 2559168    | 762.5 |
| 1993 | 19392  | 2635445    | 735.8 |
| 1994 | 18794  | 2703476    | 695.2 |
| 1995 | 20439  | 2756354    | 741.5 |
| 1996 | 19835  | 2812191    | 705.3 |
| 1997 | 18829  | 2898130    | 649.7 |
| 1998 | 18524  | 2963228    | 625.1 |

### Sources:

OFFENSE/ARREST DATA--Colorado Bureau of Investigation Annual Reports 1980-1998.

POPULATION DATA--Colorado State Demographer's Office, Department of Local Affairs.

1980-1989: Intercensal estimates, based on 1980 and 1990 Census. 1990-1998: Postcensal estimates, based on 1990 Census.

**Note:** All rates in this chart/graph were calculated using the adult Colorado population (18+ / males + females). Rate per 100,000.

## AUTO THEFT Adult Arrest Rate

Colorado Adults, Rate per 100,000, 1980-1998



| YEAR | NUMBER | POPULATION | RATE |
|------|--------|------------|------|
| 1980 | 1037   | 2096878    | 49.5 |
| 1981 | 974    | 2159370    | 45.1 |
| 1982 | 1064   | 2230331    | 47.7 |
| 1983 | 1014   | 2291745    | 44.2 |
| 1984 | 1100   | 2327091    | 47.3 |
| 1985 | 1139   | 2362460    | 48.2 |
| 1986 | 1220   | 2388632    | 51.1 |
| 1987 | 1200   | 2407569    | 49.8 |
| 1988 | 1207   | 2408110    | 50.1 |
| 1989 | 1294   | 2417146    | 53.5 |
| 1990 | 1180   | 2442464    | 48.3 |
| 1991 | 1163   | 2487571    | 46.8 |
| 1992 | 1213   | 2559168    | 47.4 |
| 1993 | 1232   | 2635445    | 46.7 |
| 1994 | 1127   | 2703476    | 41.7 |
| 1995 | 1212   | 2756354    | 44.0 |
| 1996 | 1192   | 2812191    | 42.4 |
| 1997 | 1327   | 2898130    | 45.8 |
| 1998 | 1393   | 2963228    | 47.0 |

### Sources:

OFFENSE/ARREST DATA--Colorado Bureau of Investigation Annual Reports 1980-1998.

POPULATION DATA--Colorado State Demographer's Office, Department of Local Affairs.

1980-1989: Intercensal estimates, based on 1980 and 1990 Census. 1990-1998: Postcensal estimates, based on 1990 Census.

**Note:** All rates in this chart/graph were calculated using the adult Colorado population (18+ / males + females). Rate per 100,000.

## WEAPONS CARRYING Adult Arrest Rate

Colorado Adults, Rate per 100,000, 1980-1998



| YEAR | NUMBER | POPULATION | RATE  |
|------|--------|------------|-------|
| 1980 | 2492   | 2096878    | 118.8 |
| 1981 | 2617   | 2159370    | 121.2 |
| 1982 | 3115   | 2230331    | 139.7 |
| 1983 | 3260   | 2291745    | 142.2 |
| 1984 | 3101   | 2327091    | 133.3 |
| 1985 | 3099   | 2362460    | 131.2 |
| 1986 | 3153   | 2388632    | 132.0 |
| 1987 | 2641   | 2407569    | 109.7 |
| 1988 | 2632   | 2408110    | 109.3 |
| 1989 | 2631   | 2417146    | 108.8 |
| 1990 | 2703   | 2442464    | 110.7 |
| 1991 | 2799   | 2487571    | 112.5 |
| 1992 | 2903   | 2559168    | 113.4 |
| 1993 | 3131   | 2635445    | 118.8 |
| 1994 | 3053   | 2703476    | 112.9 |
| 1995 | 2572   | 2756354    | 93.3  |
| 1996 | 2578   | 2812191    | 91.7  |
| 1997 | 2440   | 2898130    | 84.2  |
| 1998 | 2465   | 2963228    | 83.2  |

### Sources:

OFFENSE/ARREST DATA--Colorado Bureau of Investigation Annual Reports 1980-1998.

POPULATION DATA--Colorado State Demographer's Office, Department of Local Affairs.

1980-1989: Intercensal estimates, based on 1980 and 1990 Census. 1990-1998: Postcensal estimates, based on 1990 Census.

**Note:** All rates in this chart/graph were calculated using the adult Colorado population (18+ / males + females). Rate per 100,000.

# DRUG CRIMES Adult Arrest Rate

Colorado Adults, Rate per 100,000, 1980-1998



| YEAR | NUMBER | POPULATION | RATE  |
|------|--------|------------|-------|
| 1980 | 4657   | 2096878    | 222.1 |
| 1981 | 5094   | 2159370    | 235.9 |
| 1982 | 6361   | 2230331    | 285.2 |
| 1983 | 5825   | 2291745    | 254.2 |
| 1984 | 6440   | 2327091    | 276.7 |
| 1985 | 6485   | 2362460    | 274.5 |
| 1986 | 6453   | 2388632    | 270.2 |
| 1987 | 6414   | 2407569    | 266.4 |
| 1988 | 7973   | 2408110    | 331.1 |
| 1989 | 8102   | 2417146    | 335.2 |
| 1990 | 6751   | 2442464    | 276.4 |
| 1991 | 6921   | 2487571    | 278.2 |
| 1992 | 7734   | 2559168    | 302.2 |
| 1993 | 8973   | 2635445    | 340.5 |
| 1994 | 1343   | 2703476    | 49.7  |
| 1995 | 9507   | 2756354    | 344.9 |
| 1996 | 14604  | 2812191    | 519.3 |
| 1997 | 15605  | 2898130    | 538.5 |
| 1998 | 16434  | 2963228    | 554.6 |

**Sources:**

OFFENSE/ARREST DATA--Colorado Bureau of Investigation Annual Reports 1980-1998.

POPULATION DATA--Colorado State Demographer's Office, Department of Local Affairs.

1980-1989: Intercensal estimates, based on 1980 and 1990 Census. 1990-1998: Postcensal estimates, based on 1990 Census.

**Note:** All rates in this chart/graph were calculated using the adult Colorado population (18+ / males + females). Rate per 100,000.