

HOMICIDE Offense Rate*

Colorado Total Population (Adult + Juvenile), Rate per 100,000, 1980-1998



YEAR	NUMBER	POPULATION	RATE
1980	197	2907526	6.8
1981	239	2977958	8.0
1982	179	3061650	5.8
1983	200	3133708	6.4
1984	178	3170054	5.6
1985	189	3208813	5.9
1986	230	3237510	7.1
1987	191	3260585	5.9
1988	186	3262360	5.7
1989	146	3275920	4.5
1990	138	3311028	4.2
1991	197	3369750	5.8
1992	213	3464715	6.1
1993	194	3566001	5.4
1994	193	3653601	5.3
1995	205	3720519	5.5
1996	176	3822675	4.6
1997	176	3935330	4.5
1998	178	4016303	4.4

*Excludes Negligent Manslaughter

Sources:

OFFENSE/ARREST DATA--Colorado Bureau of Investigation Annual Reports 1980-1998.

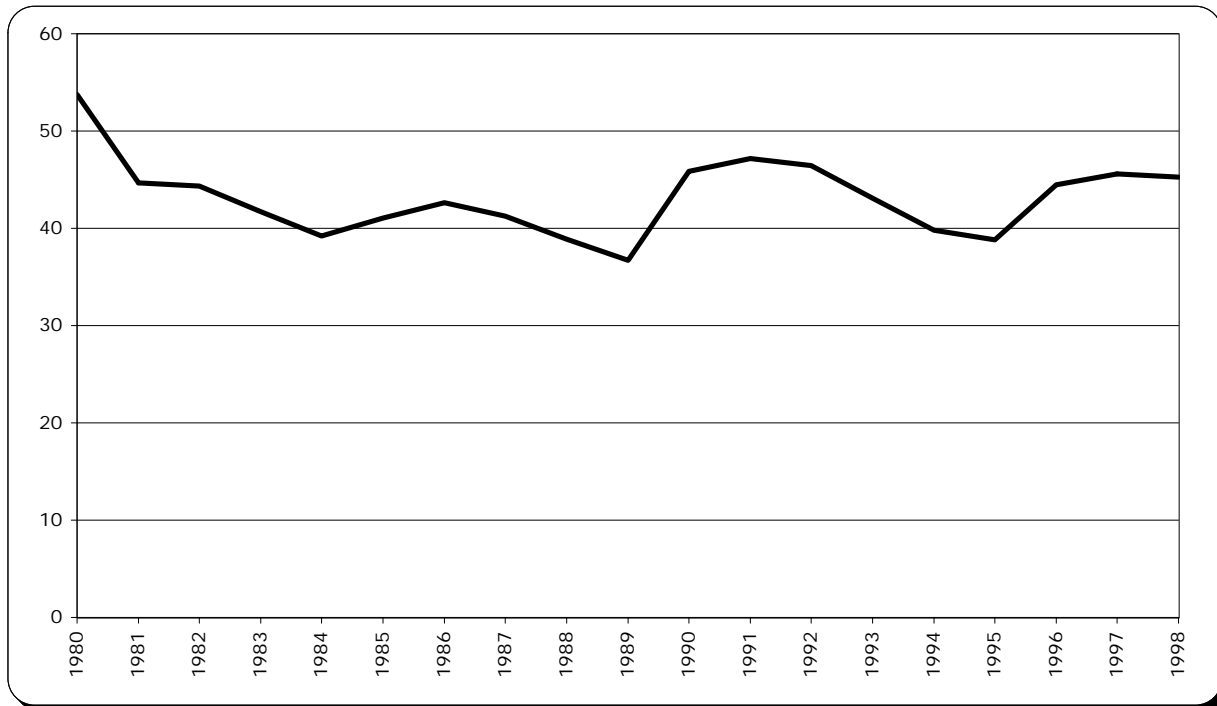
POPULATION DATA--Colorado State Demographer's Office, Department of Local Affairs.

1980-1989: Intercensal estimates, based on 1980 and 1990 Census. 1990-1998: Postcensal estimates, based on 1990 Census.

Note: All rates in this chart/graph were calculated using the total Colorado population (adults+ juveniles / males+ females). Rate per 100,000.

FORCIBLE RAPE Offense Rate

Colorado Total Population (Adult + Juvenile), Rate per 100,000, 1980-1998



YEAR	NUMBER	POPULATION	RATE
1980	1563	2907526	53.8
1981	1330	2977958	44.7
1982	1357	3061650	44.3
1983	1307	3133708	41.7
1984	1243	3170054	39.2
1985	1317	3208813	41.0
1986	1381	3237510	42.7
1987	1344	3260585	41.2
1988	1269	3262360	38.9
1989	1202	3275920	36.7
1990	1518	3311028	45.8
1991	1589	3369750	47.2
1992	1609	3464715	46.4
1993	1537	3566001	43.1
1994	1454	3653601	39.8
1995	1444	3720519	38.8
1996	1701	3822675	44.5
1997	1794	3935330	45.6
1998	1818	4016303	45.3

Sources:

OFFENSE/ARREST DATA--Colorado Bureau of Investigation Annual Reports 1980-1998.

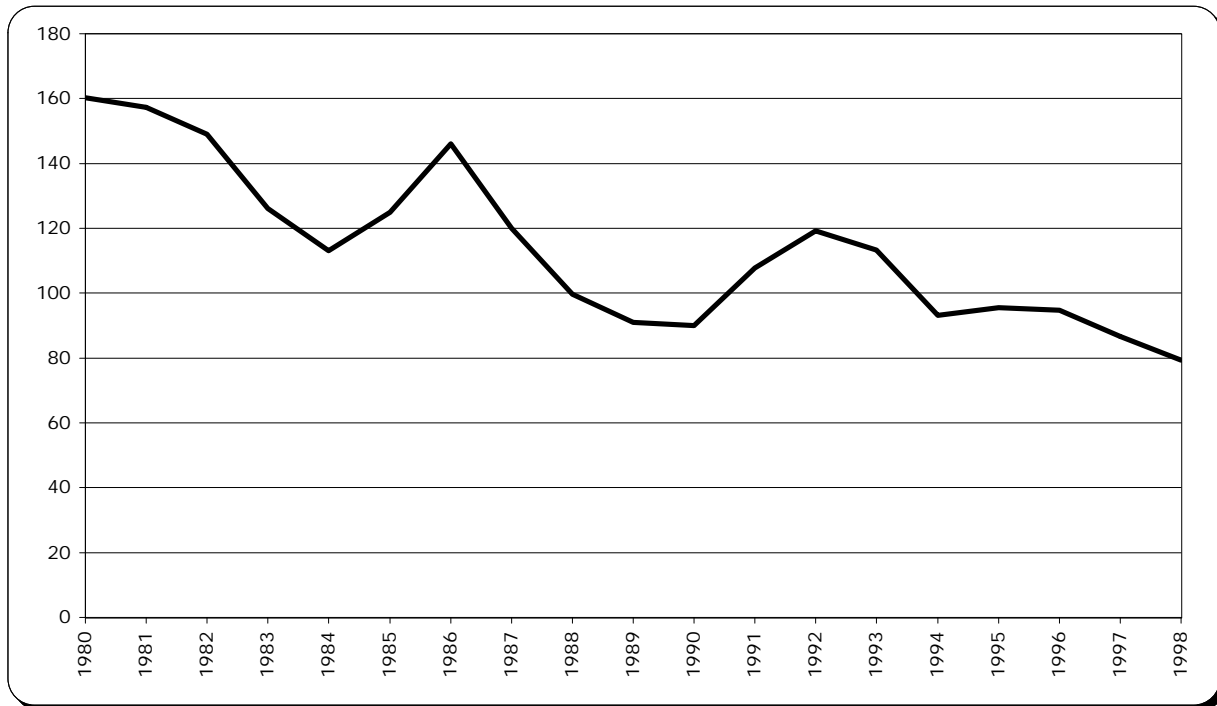
POPULATION DATA--Colorado State Demographer's Office, Department of Local Affairs.

1980-1989: Intercensal estimates, based on 1980 and 1990 Census. 1990-1998: Postcensal estimates, based on 1990 Census.

Note: All rates in this chart/graph were calculated using the total Colorado population (adults+ juveniles / males+ females). Rate per 100,000.

ROBBERY Offense Rate

Colorado Total Population (Adult + Juvenile), Rate per 100,000, 1980-1998



YEAR	NUMBER	POPULATION	RATE
1980	4659	2907526	160.2
1981	4685	2977958	157.3
1982	4560	3061650	148.9
1983	3951	3133708	126.1
1984	3588	3170054	113.2
1985	4006	3208813	124.8
1986	4728	3237510	146.0
1987	3912	3260585	120.0
1988	3249	3262360	99.6
1989	2983	3275920	91.1
1990	2982	3311028	90.1
1991	3630	3369750	107.7
1992	4131	3464715	119.2
1993	4040	3566001	113.3
1994	3403	3653601	93.1
1995	3551	3720519	95.4
1996	3625	3822675	94.8
1997	3406	3935330	86.5
1998	3187	4016303	79.4

Sources:

OFFENSE/ARREST DATA--Colorado Bureau of Investigation Annual Reports 1980-1998.

POPULATION DATA--Colorado State Demographer's Office, Department of Local Affairs.

1980-1989: Intercensal estimates, based on 1980 and 1990 Census. 1990-1998: Postcensal estimates, based on 1990 Census.

Note: All rates in this chart/graph were calculated using the total Colorado population (adults+ juveniles / males+ females). Rate per 100,000.

AGGRAVATED ASSAULT Offense Rate*

Colorado Total Population (Adult + Juvenile), Rate per 100,000, 1980-1998



YEAR	NUMBER	POPULATION	RATE
1980	10658	2907526	366.6
1981	9282	2977958	311.7
1982	9061	3061650	296.0
1983	9353	3133708	298.5
1984	9411	3170054	296.9
1985	9642	3208813	300.5
1986	10747	3237510	332.0
1987	9951	3260585	305.2
1988	10825	3262360	331.8
1989	11294	3275920	344.8
1990	12668	3311028	382.6
1991	13443	3369750	398.9
1992	13482	3464715	389.1
1993	13469	3566001	377.7
1994	11473	3653601	314.0
1995	10812	3720519	290.6
1996	10312	3822675	269.8
1997	9279	3935330	235.8
1998	9095	4016303	226.5

*Excludes Simple Assault

Sources:

OFFENSE/ARREST DATA--Colorado Bureau of Investigation Annual Reports 1980-1998.

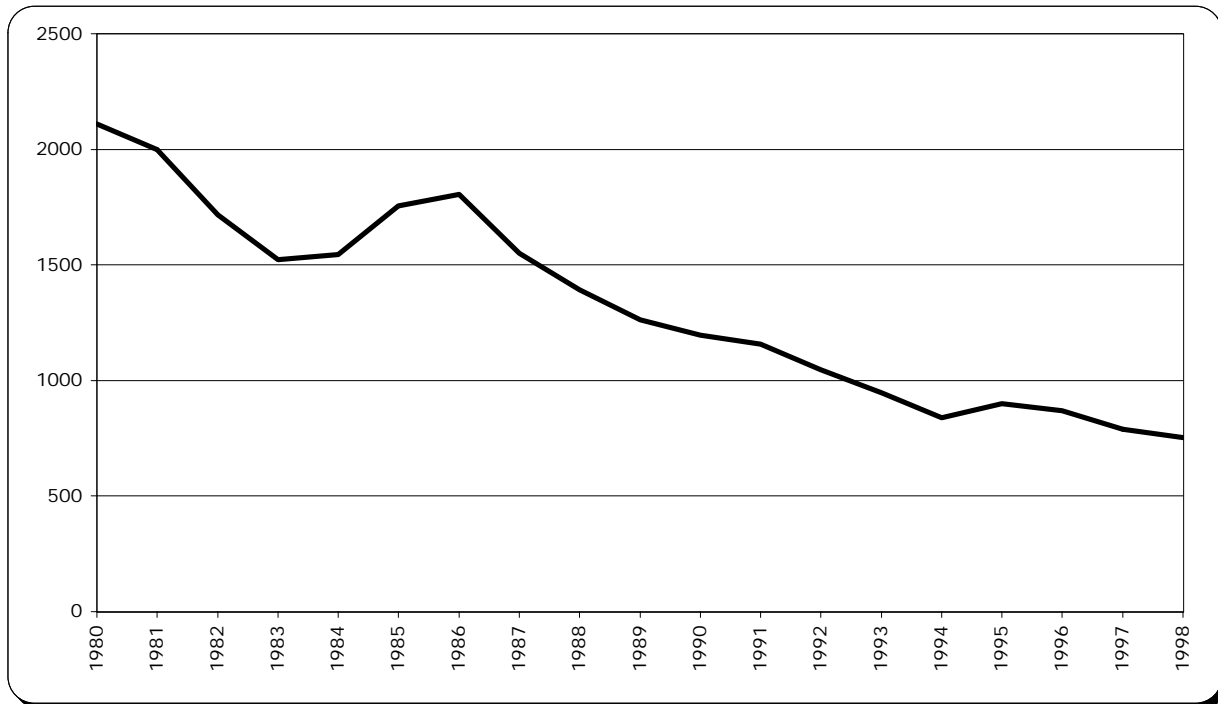
POPULATION DATA--Colorado State Demographer's Office, Department of Local Affairs.

1980-1989: Intercensal estimates, based on 1980 and 1990 Census. 1990-1998: Postcensal estimates, based on 1990 Census.

Note: All rates in this chart/graph were calculated using the total Colorado population (adults+ juveniles / males+ females). Rate per 100,000.

BURGLARY Offense Rate

Colorado Total Population (Adult + Juvenile), Rate per 100,000, 1980-1998



YEAR	NUMBER	POPULATION	RATE
1980	61333	2907526	2109.5
1981	59503	2977958	1998.1
1982	52519	3061650	1715.4
1983	47693	3133708	1521.9
1984	48990	3170054	1545.4
1985	56312	3208813	1754.9
1986	58441	3237510	1805.1
1987	50535	3260585	1549.9
1988	45437	3262360	1392.8
1989	41363	3275920	1262.6
1990	39617	3311028	1196.5
1991	39031	3369750	1158.3
1992	36298	3464715	1047.6
1993	33723	3566001	945.7
1994	30668	3653601	839.4
1995	33467	3720519	899.5
1996	33210	3822675	868.8
1997	31014	3935330	788.1
1998	30248	4016303	753.1

Sources:

OFFENSE/ARREST DATA--Colorado Bureau of Investigation Annual Reports 1980-1998.

POPULATION DATA--Colorado State Demographer's Office, Department of Local Affairs.

1980-1989: Intercensal estimates, based on 1980 and 1990 Census. 1990-1998: Postcensal estimates, based on 1990 Census.

Note: All rates in this chart/graph were calculated using the total Colorado population (adults+ juveniles / males+ females). Rate per 100,000.

THEFT Offense Rate

Colorado Total Population (Adult + Juvenile), Rate per 100,000, 1980-1998



YEAR	NUMBER	POPULATION	RATE
1980	133800	2907526	4601.9
1981	128135	2977958	4302.8
1982	132383	3061650	4323.9
1983	131991	3133708	4212.0
1984	125958	3170054	3973.4
1985	136629	3208813	4257.9
1986	137333	3237510	4241.9
1987	131464	3260585	4031.9
1988	127433	3262360	3906.2
1989	127429	3275920	3889.9
1990	127335	3311028	3845.8
1991	132264	3369750	3925.0
1992	124037	3464715	3580.0
1993	115034	3566001	3225.9
1994	114713	3653601	3139.7
1995	130152	3720519	3498.2
1996	124874	3822675	3266.7
1997	118121	3935330	3001.6
1998	112396	4016303	2798.5

Sources:

OFFENSE/ARREST DATA--Colorado Bureau of Investigation Annual Reports 1980-1998.

POPULATION DATA--Colorado State Demographer's Office, Department of Local Affairs.

1980-1989: Intercensal estimates, based on 1980 and 1990 Census. 1990-1998: Postcensal estimates, based on 1990 Census.

Note: All rates in this chart/graph were calculated using the total Colorado population (adults+ juveniles / males+ females). Rate per 100,000.

AUTO THEFT Offense Rate

Colorado Total Population (Adult + Juvenile), Rate per 100,000, 1980-1998



YEAR	NUMBER	POPULATION	RATE
1980	13844	2907526	476.1
1981	12101	2977958	406.4
1982	11938	3061650	389.9
1983	11606	3133708	370.4
1984	12436	3170054	392.3
1985	13955	3208813	434.9
1986	15844	3237510	489.4
1987	14354	3260585	440.2
1988	13859	3262360	424.8
1989	14998	3275920	457.8
1990	14093	3311028	425.6
1991	14377	3369750	426.6
1992	17273	3464715	498.5
1993	15559	3566001	436.3
1994	12498	3653601	342.1
1995	14401	3720519	387.1
1996	14723	3822675	385.1
1997	16314	3935330	414.6
1998	15687	4016303	390.6

Sources:

OFFENSE/ARREST DATA--Colorado Bureau of Investigation Annual Reports 1980-1998.

POPULATION DATA--Colorado State Demographer's Office, Department of Local Affairs.

1980-1989: Intercensal estimates, based on 1980 and 1990 Census. 1990-1998: Postcensal estimates, based on 1990 Census.

Note: All rates in this chart/graph were calculated using the total Colorado population (adults+ juveniles / males+ females). Rate per 100,000.